

## HERMA 400

Compact, modular, fully automatic

# HERMA 400 – The compact labeller range with a modular system

HERMA 400, this uniquely compact labeller has unparalleled versatility thanks to a well thought out modular construction system. The advantage: whatever the configuration, the basic servo drive unit remains the same! One unit: one development, one spare part. Thanks to the wide range of modules available the HERMA 400 can be integrated into any production line. Or it can be built into a labelling machine which has been specifically developed to suit your individual requirements. A perfect solution for every problem.

## The advantages at a glance:

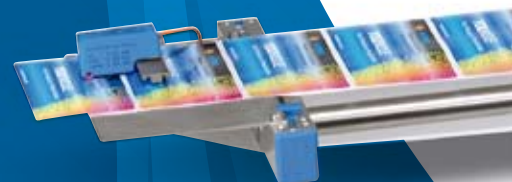
- > Control integrated into the applicator – no separate control box is required
- > Clearly laid out operating display
- > Wide range power input 100V AC ... 240V AC  $\pm$  10 %, 50 Hz ... 60Hz
- > Automatic synchronization of labelling and product speeds
- > Comprehensive range of modules: pedestals, label sensors, printing and embossing units – always a perfect fit
- > Special unwind unit giving consistent web tension
- > Available as left-hand and right-hand versions, for upright, horizontal or suspended operation, width in increments of 80 mm / 3" up to 320 mm / 12"
- > PLC connection – no problem at all
- > Transparent labels – no problem at all
- > Easy to expand
- > Integrate most popular coders/printers

In order to make labelling even more flexible, convenient and efficient the HERMA 400 is under constant development.



## Everything under control

For individually configuring your applicator the clearly laid out display panel allows for convenient and simple adjustment to the operating parameters.



# HERMA 400 – with standard unwind unit

- > For label reels with an outer diameter of up to 300 mm / 12" and a core of 76 mm / 3". Maximum labelling speed: 40 m / 1,500" per minute.



## Perfect for the role

The special unwind unit keeps a constant web tension, thus avoiding tolerance problems at the dispensing beak. Both unwind and rewind units are built almost identically and provide the same reliability. Threading and tensioning the web is very user-friendly.



# HERMA 400 – with independently driven reel holder

## Independently driven reel holder and backing paper take-up unit

- > For label reels with an outer diameter of up to 400 mm/16" and a core diameter of 76 mm/3"
- > Max. labelling speed: up to 80 m/3,000" per minute
- > Max. labelling speed with optional loop-type unwinder: up to 150 m/5,900" per minute



# The Modules

## Dispensing



### Rigid beak with application roller

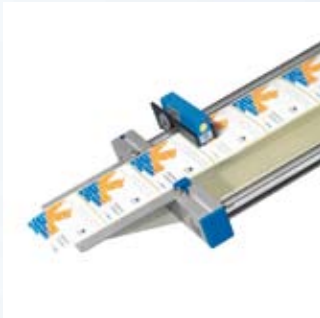
For linear labelling, where the sprung-loaded application roller applies the labels onto the product.



### Pivot beak with application roller

The solution for linear labelling of objects with varying heights or uneven shapes.

## Detecting



### Optoelectronic sensing unit

This non-contact system adapts quickly and easily to various light transmitting properties by means of a selfteach facility.



### HERMA sensor FS01

Extremely fast and powerful label sensing system. Especially suitable for use with transparent labels.

## Printing



### Hot-foil printer

Ideal solution for high-quality codes etc. in a wide range of colours.



### Thermal transfer printer

Versatile system developed for printing variable label information such as text, real-time data, bar codes, and graphics. Simply integrate third party printers of your choice.

## Mounting



### Mounting pedestals

Easily adjusted in all planes. Simple adjustment of the angle of label application.



### HERMA universal pedestal

Convenient mounting for top, side or bottom labelling. Wheels are optional.

HERMA GmbH  
Division Labelling Systems  
70324 Stuttgart  
[www.herma.com](http://www.herma.com)  
[www.herma.co.uk](http://www.herma.co.uk)